



AERIAL VIEW



CASHIO STREET ELEVATION



ARCHITECTURE • PLANNING

122 E. ARRELLAGA
SANTA BARBARA
CALIFORNIA 93101
805 962 2746

ROBERTSON MEMORY CARE
ALZHEIMERS & COGNITIVE CARE HOUSING
1000 CALLE DE LOS ANGELES, SANTA BARBARA, CA 93101

DATE	ISSUANCE OR REVISION
05/26/22	INITIAL SET

THIS DRAWING IS COPYRIGHTED MATERIAL UNDER THE REGISTRATION OF HANSEN & BLETCHER ARCHITECTS A PROFESSIONAL CORPORATION OF CALIFORNIA. ALL RIGHTS RESERVED. REPRODUCTION WITHOUT PERMISSION IS PROHIBITED.

SHEET CONTENTS
3D - VIEWS
PROJECT NO. 9959

SHEET
A3.4



ARCHITECTURE • PLANNING

122 E. ARRELLAGA
SANTA BARBARA
CALIFORNIA 93101
805 962 2746

ROBERTSON MEMORY CARE

ALZHEIMERS & COGNITIVE CARE HOUSING
11500 ARRELLAGA BLVD, SUITE 100
SANTA BARBARA, CA 93101

S ROBERTSON BLVD & CASHIO STREET



DATE	ISSUANCE OR REVISION
05/26/22	INITIAL SET

THIS DRAWING IS COPYRIGHTED MATERIAL UNDER THE REGISTRATION OF THE ARCHITECTURE ACT OF 1967. ANY REPRODUCTION OR TRANSMISSION IN ANY FORM OR BY ANY MEANS WITHOUT THE WRITTEN PERMISSION OF HBA ARCHITECTURE IS PROHIBITED.

SHEET CONTENTS

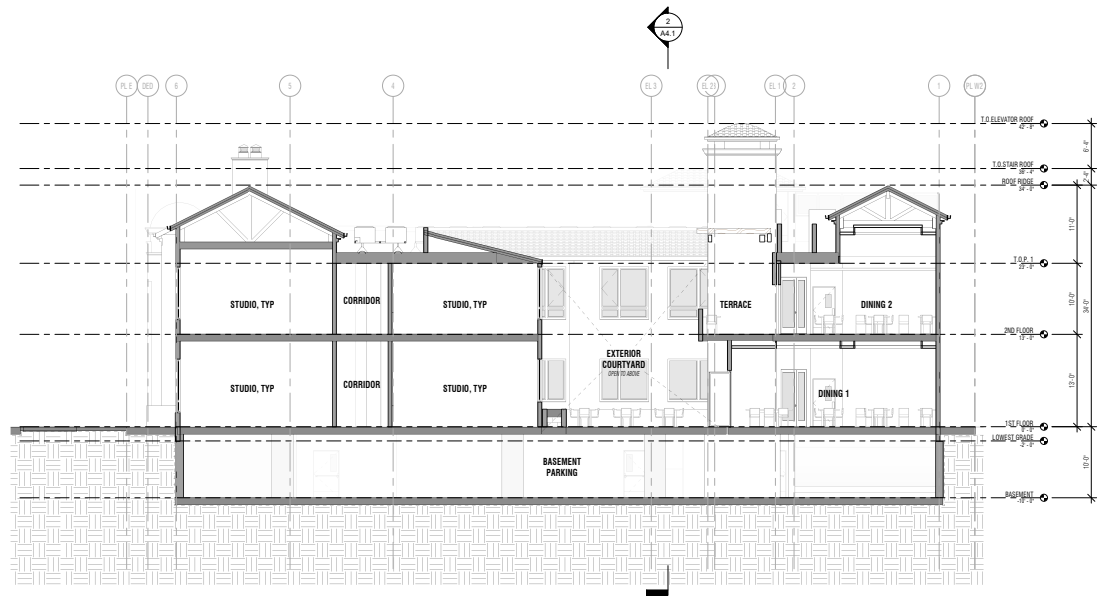
3D - VIEWS

PROJECT NO. 9959

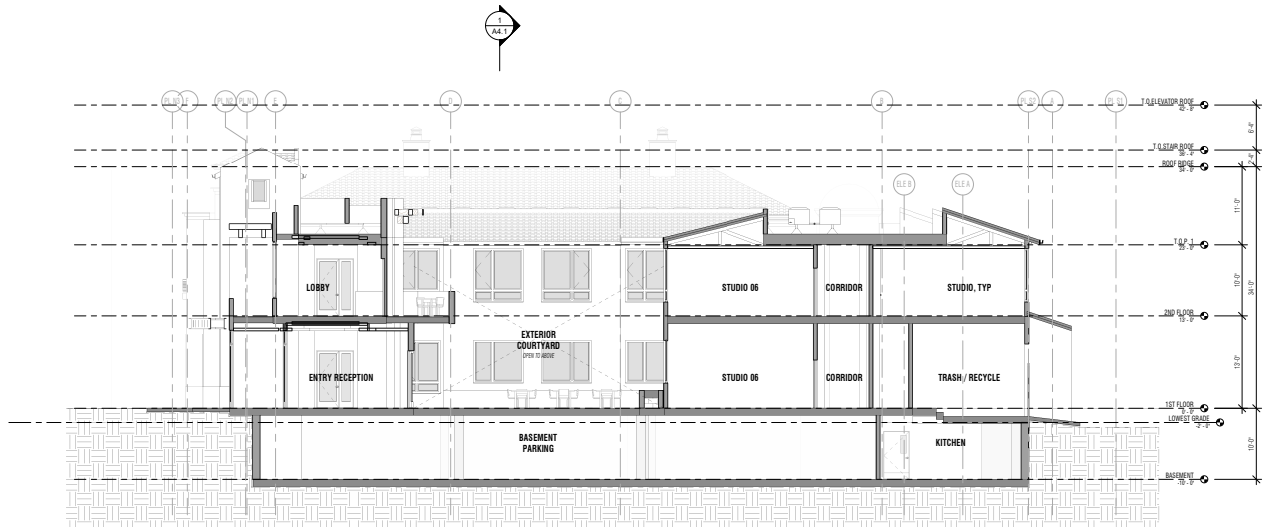
SHEET

A3.5

S ROBERTSON BLVD ELEVATION



OVERALL BUILDING SECTION 02 1/8" = 1'-0" 1



OVERALL BUILDING SECTION 01 1/8" = 1'-0" 2

DATE	ISSUANCE OR REVISION
05/26/22	INTITLEMENT SET

THIS DRAWING IS COPYRIGHTED MATERIAL UNDER THE REGISTRATION OF HBA ARCHITECTURE + PLANNING. ALL RIGHTS RESERVED. REPRODUCTION OR DISTRIBUTION OF THIS DRAWING WITHOUT THE WRITTEN CONSENT OF HBA ARCHITECTURE + PLANNING IS PROHIBITED.

SHEET CONTENTS
OVERALL BUILDING SECTIONS
PROJECT NO. 9959

SHEET
A4.1