

REVISIONS	BY

B. BAEEN
CONSULTANT ENGINEER, INC.,
11040 SANTA MONICA BLVD., SUITE 328, LOS ANGELES, CA 90025



15 UNITS APARTMENT
8767 AIRDROME ST.,
LOS ANGELES, CA 90035

Rev: _____
Scale: _____
Date: _____
A-9



BAMBOO WOOD # EPC-LUM20-307F-PP



LA HABRA STUCCO [RANCH 3024L (27)]



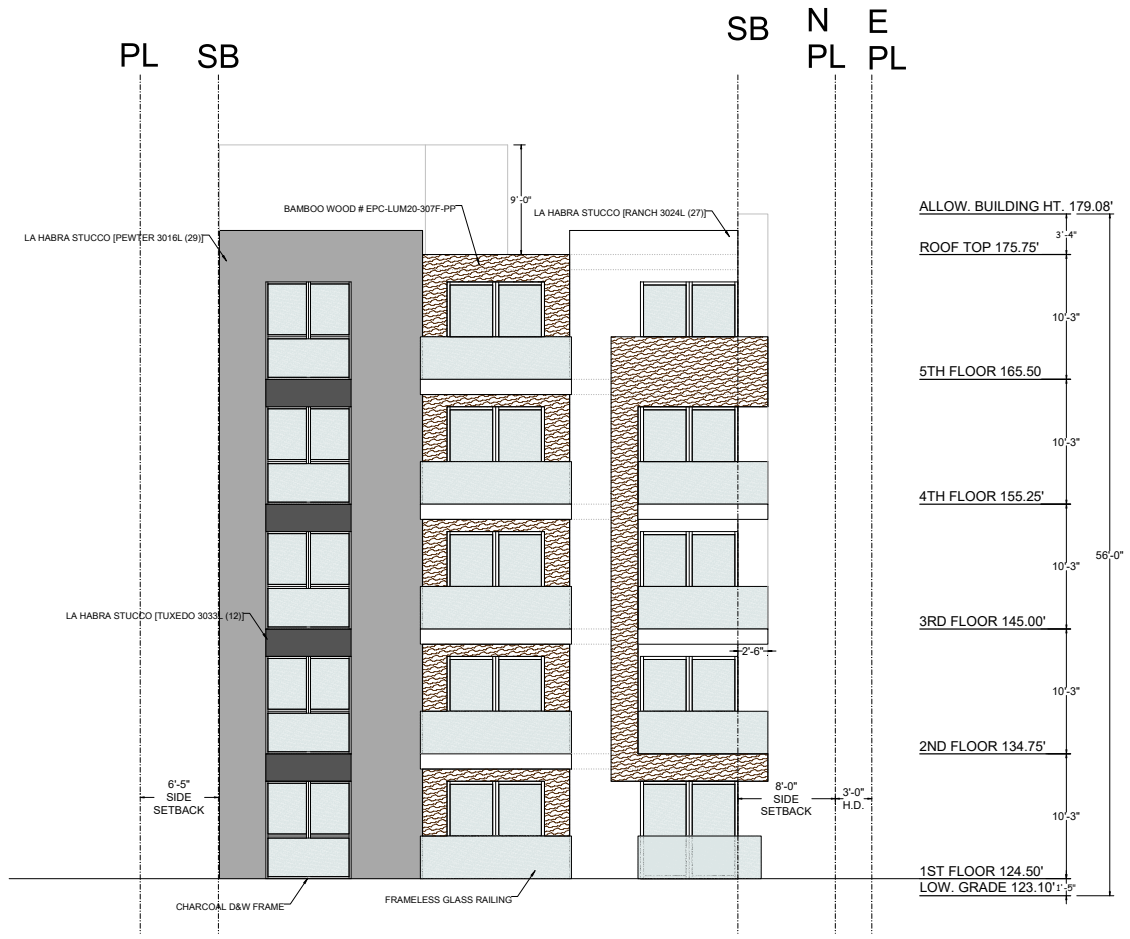
LA HABRA STUCCO [PEWTER 3016L (29)]



LA HABRA STUCCO [TUXEDO 3033L (12)]



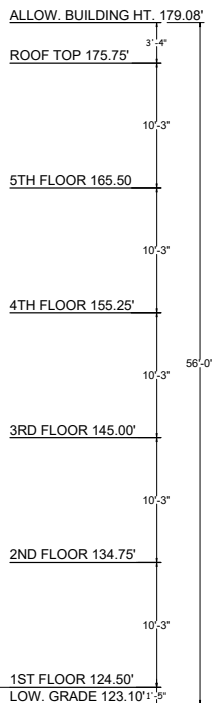
FRAMELESS GLASS RAILING



WEST ELEVATION

SCALE: 1/4"=1'-0"

ALL DOOR & WINDOWS TO BE RECESSED 2".



SOUTH ELEVATION

SCALE: 1/4"=1'-0"



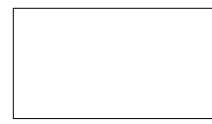
FRAMELESS GLASS RAILING



LA HABRA STUCCO [TUXEDO 3033L (12)]



LA HABRA STUCCO [PEWTER 3016L (29)]



LA HABRA STUCCO [RANCH 3024L (27)]



BAMBOO WOOD # EPC-LUM20-307F-PP

REVISIONS	BY

B. RAEEN
 CONSULTANT ENGINEER, INC.
 11000 SANTA MONICA BLVD. SUITE 326, LOS ANGELES, CA 90025
 TEL: (310) 892-2448
 FAX: (310) 892-2449
 www.braeen.com



15 UNITS APARTMENT
 8767 AIRDROME ST.
 LOS ANGELES, CA 90035

Date: _____
 Scale: _____
 Name: _____
 Job: _____
 Sheet: **A-11**
 Title: _____

PL SB

SB

PL



ALLOW. BUILDING HT. 179.08'
 ROOF TOP 175.75'
 5TH FLOOR 165.50
 4TH FLOOR 155.25'
 3RD FLOOR 145.00'
 2ND FLOOR 134.75'
 1ST FLOOR 124.50'
 LOW. GRADE 123.10'
 56'-0"

NORTH ELEVATION

SCALE: 1/4"=1'-0"



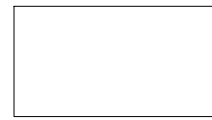
FRAMELESS GLASS RAILING



LA HABRA STUCCO [TUXEDO 3033L (12)]



LA HABRA STUCCO [PEWTER 3016L (29)]



LA HABRA STUCCO [RANCH 3024L (27)]



BAMBOO WOOD # EPC-LUM20-307F-PP

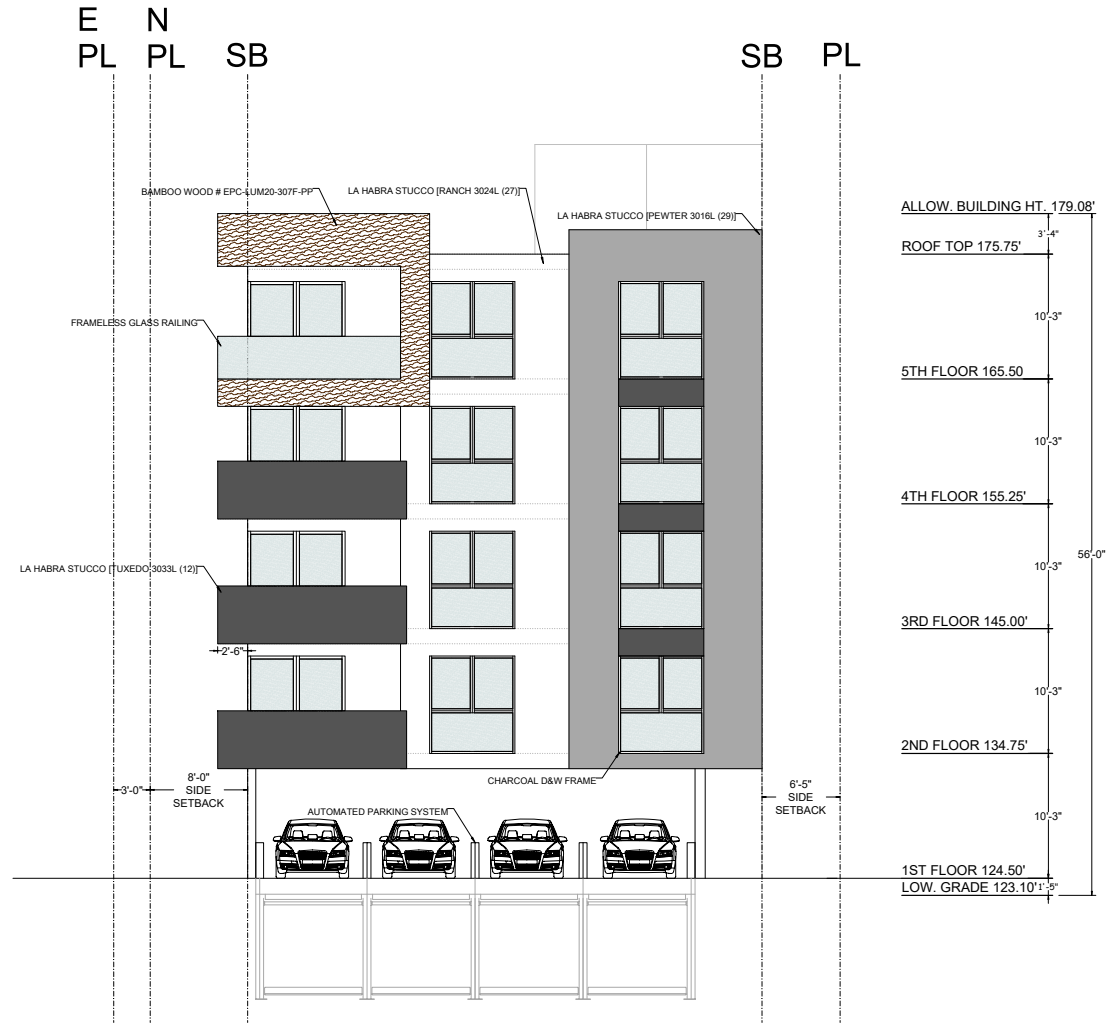
REVISIONS	BY

B. RAEEN
CONSULTANT ENGINEER, INC.,
11040 SANTA MONICA BLVD. SUITE 128, LOS ANGELES, CA 90025



15 UNITS APARTMENT
8767 AIRDROME ST.,
LOS ANGELES, CA 90035

Drawn: _____
Scale: _____
Checked: _____
Date: _____
Sheet: **A-12**
Title: _____



BAMBOO WOOD # EPC-LUM20-307F-PP



LA HABRA STUCCO [RANCH 3024L (27)]



LA HABRA STUCCO [PEWTER 3016L (29)]



LA HABRA STUCCO [TUXEDO 3033L (12)]



FRAMELESS GLASS RAILING

EAST ELEVATION

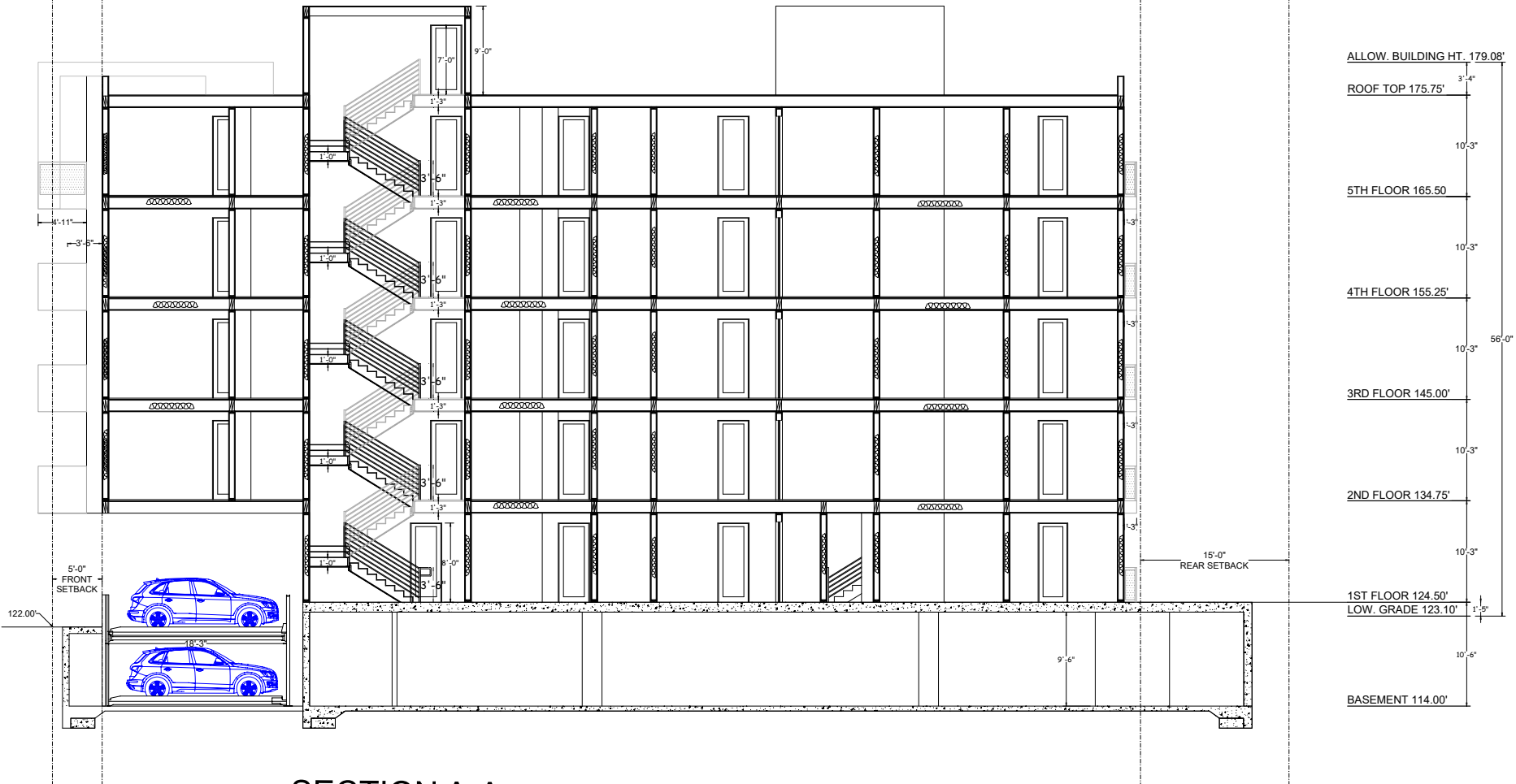
SCALE: 1/4"=1'-0"

ALL DOOR & WINDOWS TO BE RECESSED 2".

PL SB

SB

PL



SECTION A-A

SCALE: 1/4"=1'-0"

NO.	DATE	REVISIONS	BY

B. RAEEN
 CONSULTANT ENGINEER, INC.,
 11040 SANTA MONICA BLVD, SUITE 328, LOS ANGELES, CA 90025

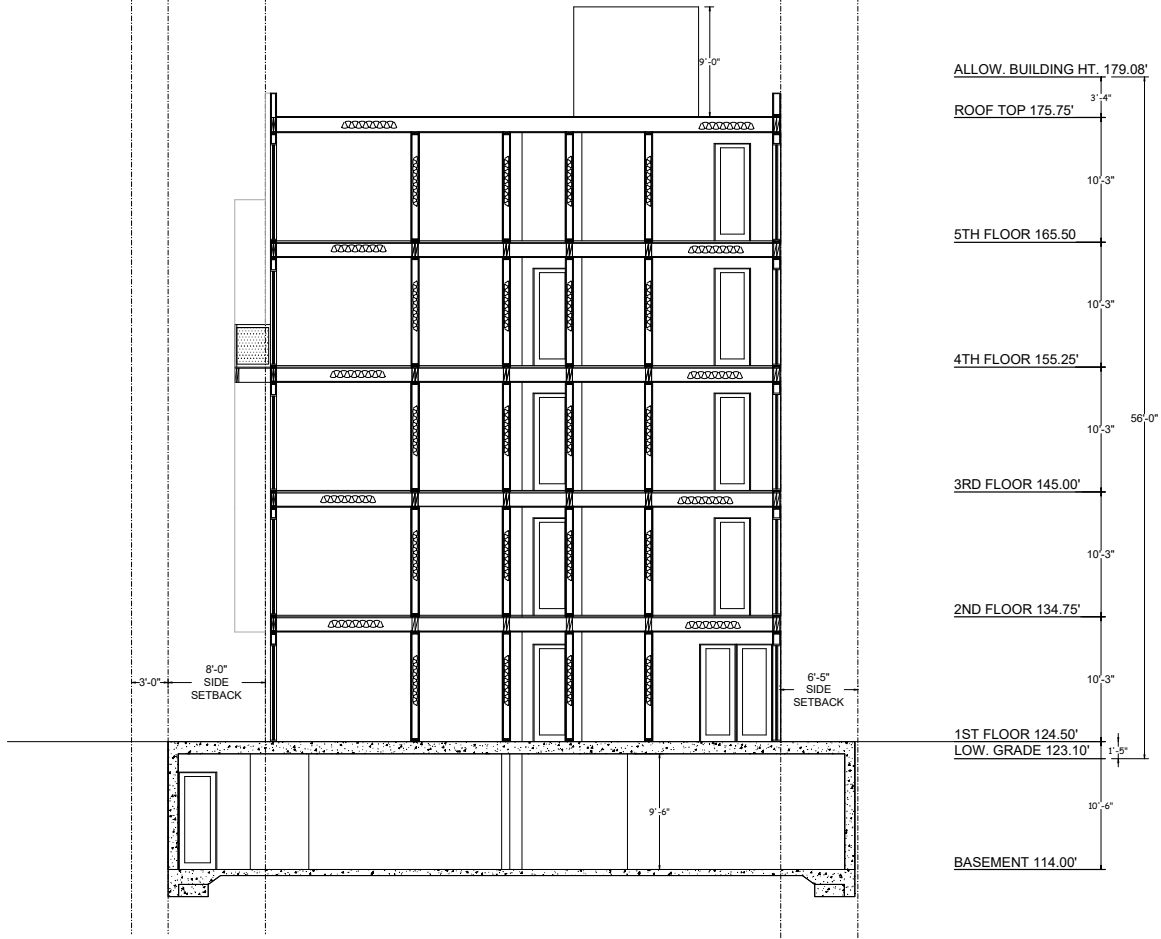


15 UNITS APARTMENT
 8767 AIRDROME ST,
 LOS ANGELES, CA 90035

Drawn	
Scale	
Checked	
Job	
Sheet	

A-13

E PL PL SB SB PL



SECTION B-B

SCALE: 1/4"=1'-0"

REVISIONS	BY

REGISTERED PROFESSIONAL ARCHITECT
 STATE OF CALIFORNIA ARCHITECTURAL BOARD
 ARCHITECT NO. 10000
 10/10/2010
 10/10/2010

B. RAEEN
 CONSULTANT ENGINEER, INC.
 11040 SANTA MONICA BLVD. SUITE 126, LOS ANGELES, CA 90025



15 UNITS APARTMENT
 8767 AIRDROME ST,
 LOS ANGELES, CA 90035

Drawn	
Check	
Design	
Job	
Sheet	

A-14